



ORBI AX4200 TRI-BAND MESH WIFI 6 SYSTEM SETUP

Manual



Scan the QR code
to visit our website

Orbi AX4200 Tri-Band Mesh WiFi 6 System Setup

- Open the box. You've got the main router (with a yellow WAN port) and the satellites.
- Grab the router and plug it into your modem with the Ethernet cable they gave you.
- WAN port → modem. Power it up.
- Wait for the white light to stop doing its little disco dance. When it turns solid white or blue, you're good.

Orbi App Configuration

- Go to the App Store or Google Play, search "Orbi." It's the purple icon. Install it. No app = no easy setup, so don't try to wing it through the web interface.

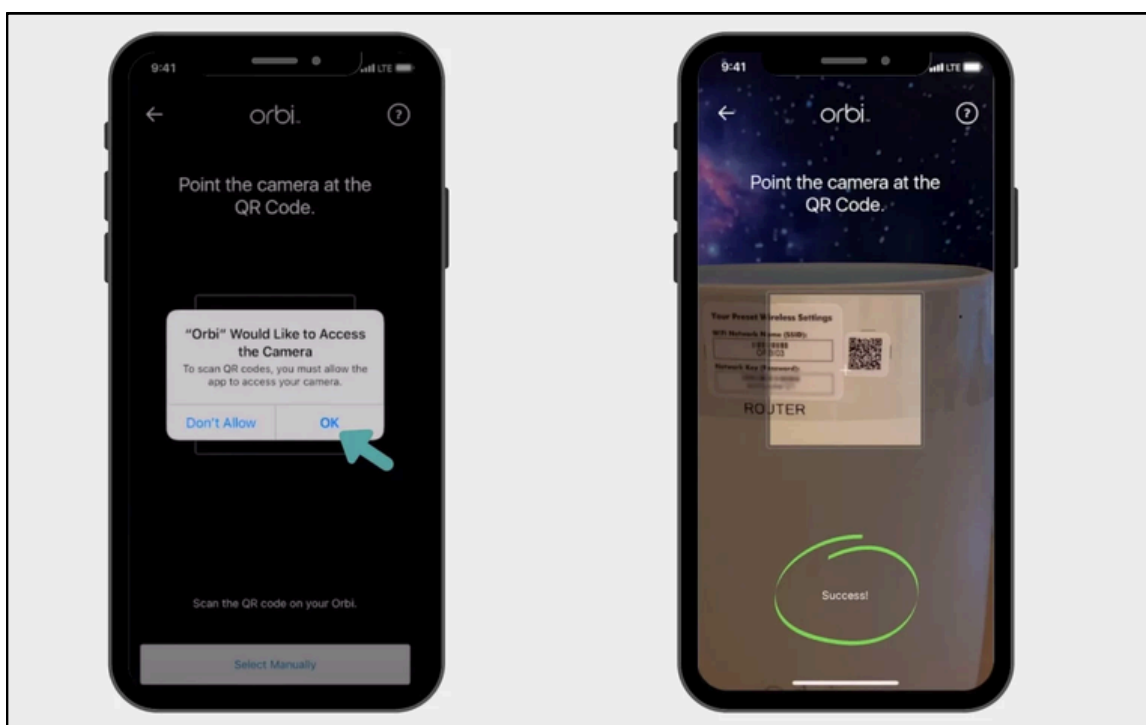


Open the Orbi App

- Open the Orbi app, create an account or sign in if you already have one. Yeah, it wants your email. Just do it. The app will try to find your Orbi automatically over Bluetooth. Keep your phone close. If it can't find it, restart the app and try again. This part can be flaky.

Follow the prompts

- The app will ask for some stuff — scan the QR code on the router if it asks. Then it'll walk you through setting up your Wi-Fi name and password. Pick something unique, not "Orbi123."



Add Satellites

- Once the main router is online, the app will tell you to power up your satellites. Plug them in where you want coverage. Don't go crazy far from the main router or they'll sync like molasses. Watch the ring light:

Blue = good connection

Amber = meh, move it closer

Magenta = nope, no connection

If it's magenta, you either went too far or the thing just feels like trolling you. Move it closer.

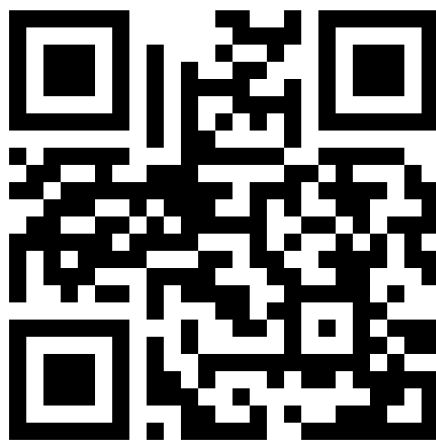
Update firmware

- The app will almost always scream about updates. Do it now. Firmware fixes half the bugs you're about to complain about on Reddit later.
- Once you see the "All Set" screen, you're technically live. Test your speed. If things feel slow, restart everything — modem, router, satellites. Yes, the classic "turn it off and on" still works here.



THANK YOU

 support@orbitloginnet.com



Scan the QR code to
visit our website